

NAME	PIN	
	ESOP-8	ESOP-8

SCT71405 Series

NAME	PIN FUNCTION		
	TO252-4	TO252-4	
	1		

1

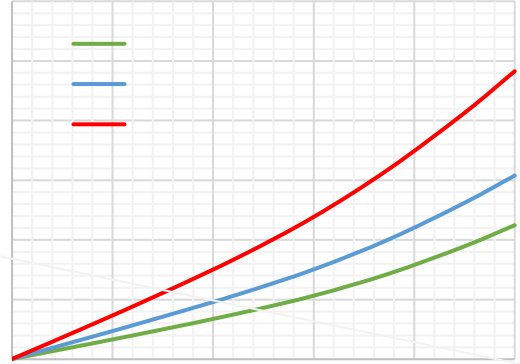
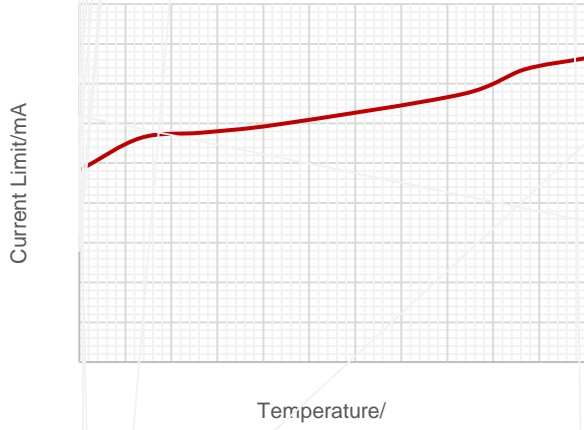
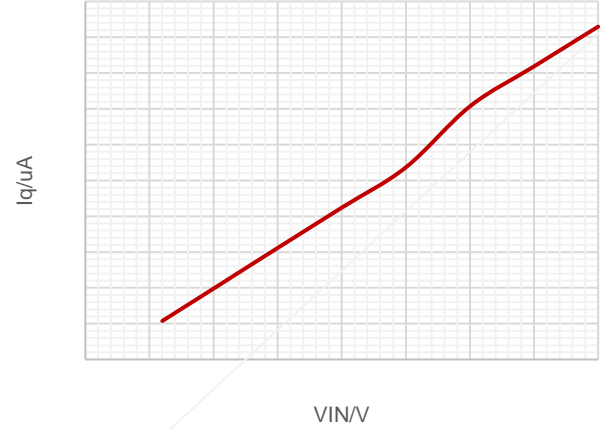
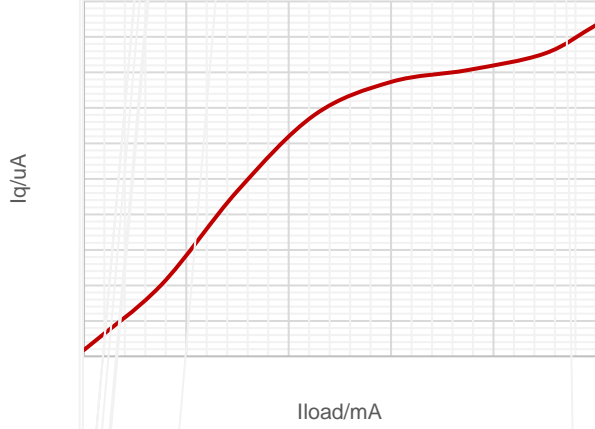
SCT71405 Series

PARAMETER (4-layer)

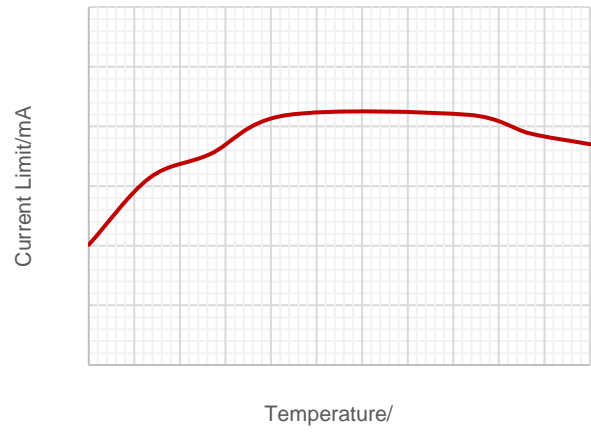
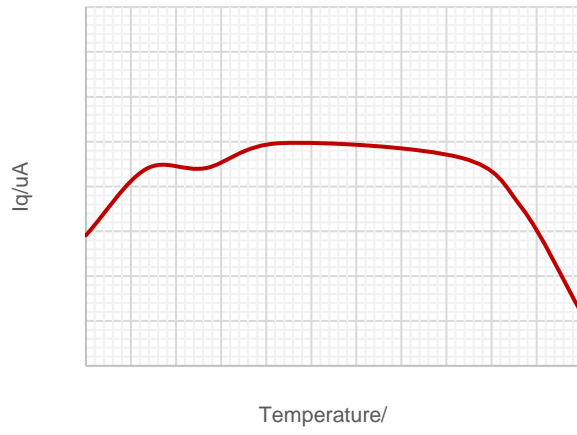
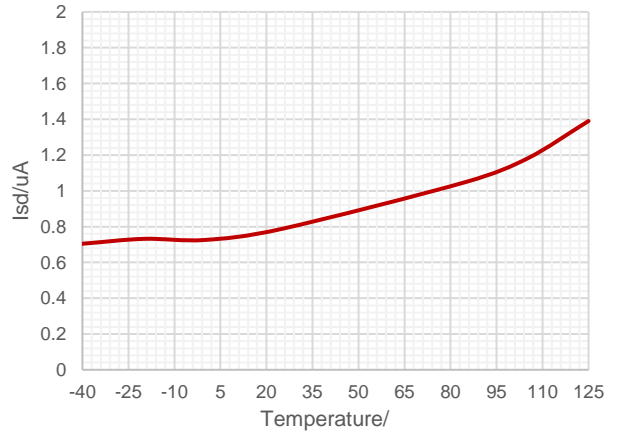
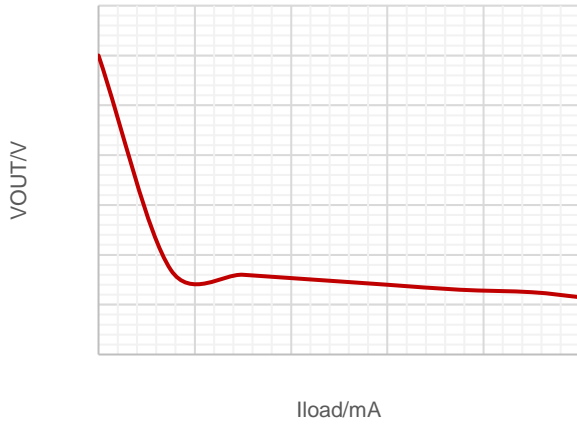
SCT71405 Series

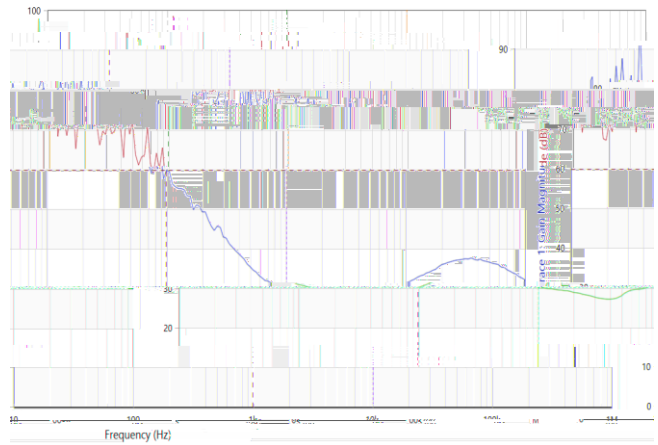
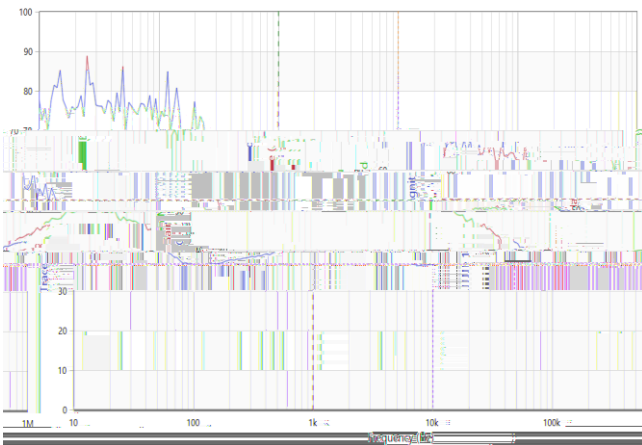
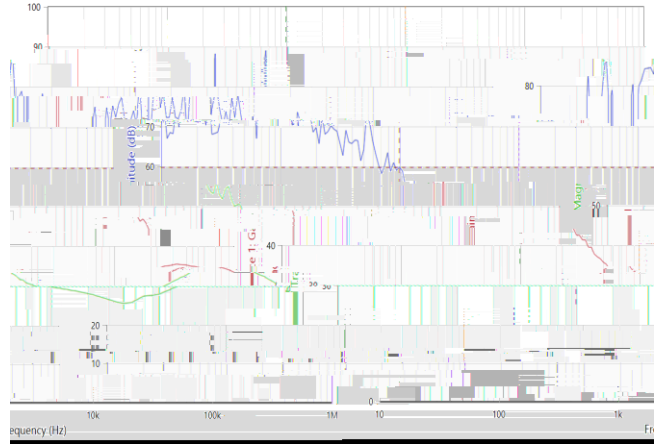
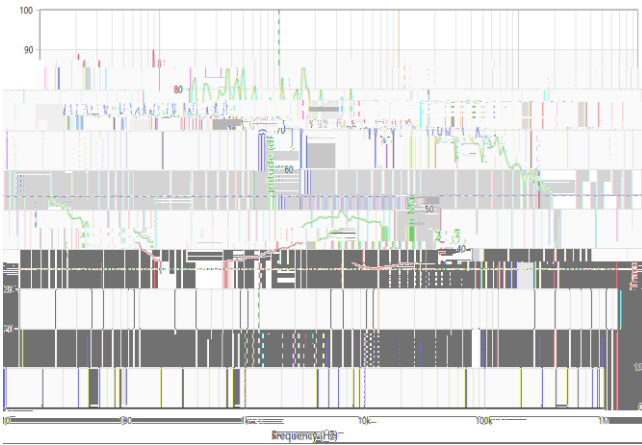
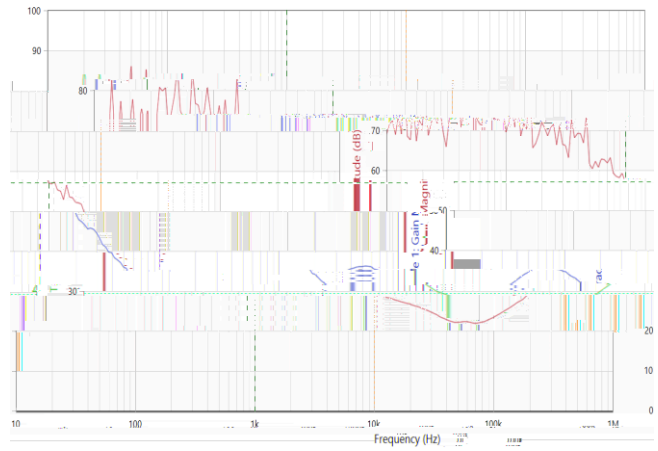
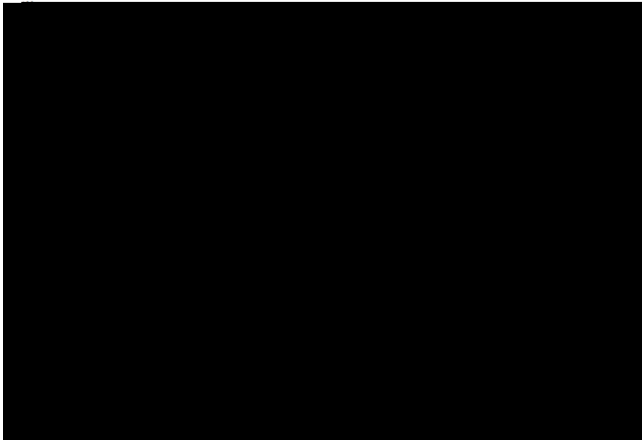
SYMBOL	PARAMETER	TEST CONDITION	MIN	TYP	MAX	UNIT
Power Supply						
	()					
	()					

SCT71405 Series

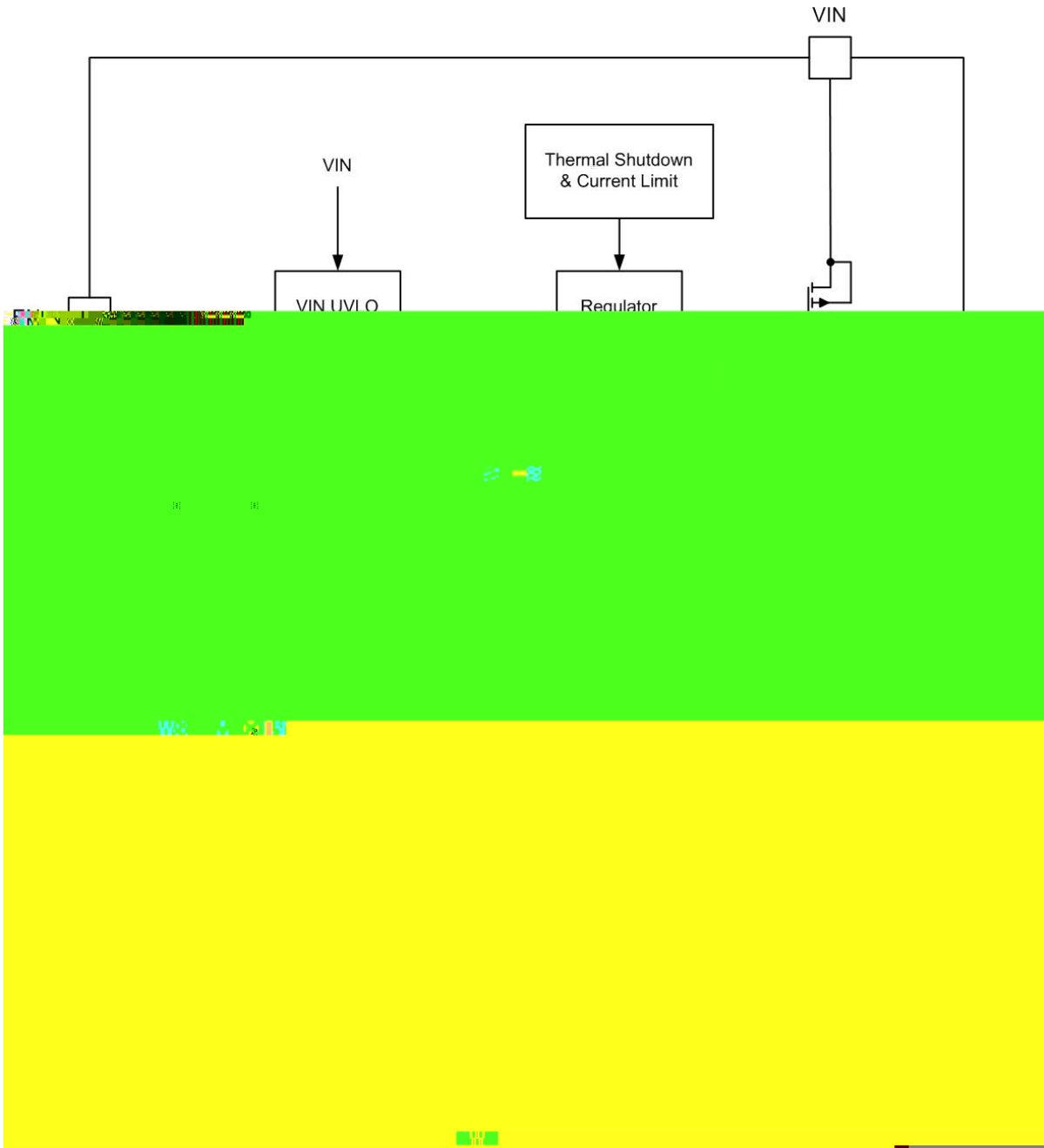


SCT71405 Series





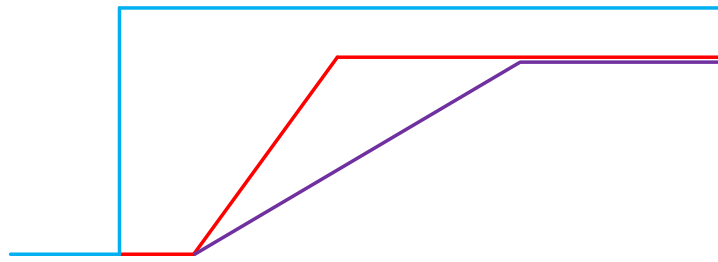
SCT71405 Series



Overview

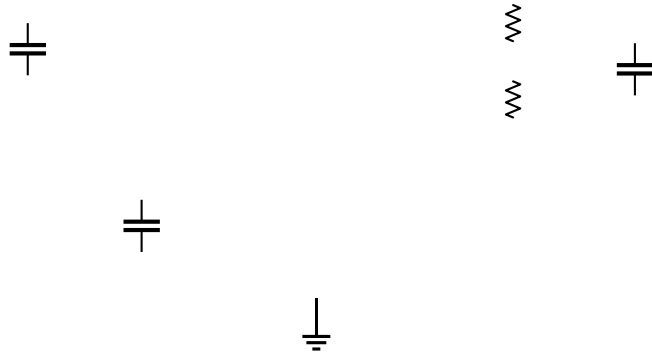
SCT71405 Series

Over Current Limit and Foldback Current Limit



Power-Good and Power-Good Delay

Typical application 1:



SCT71405 Series

Output Voltage

—

Table 1: Compensation Values for Typical Output Voltage/Capacitor Combinations

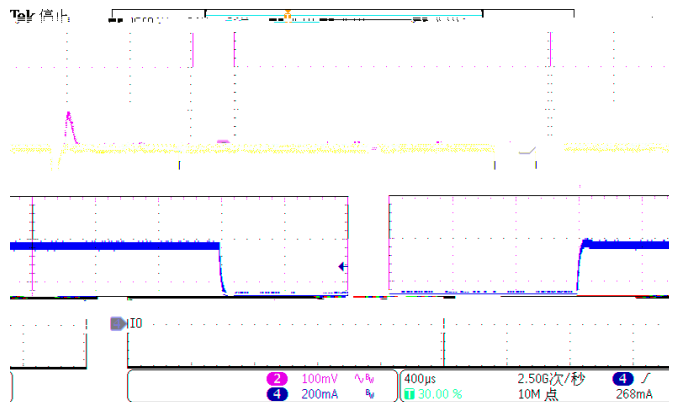
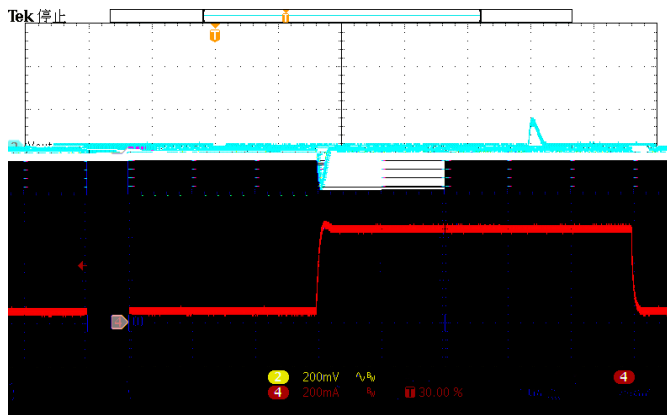
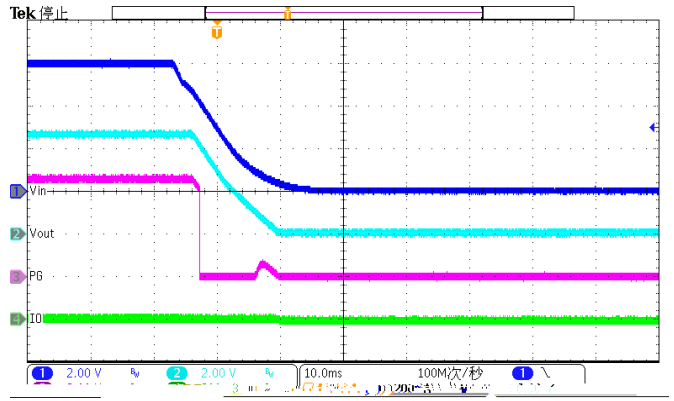
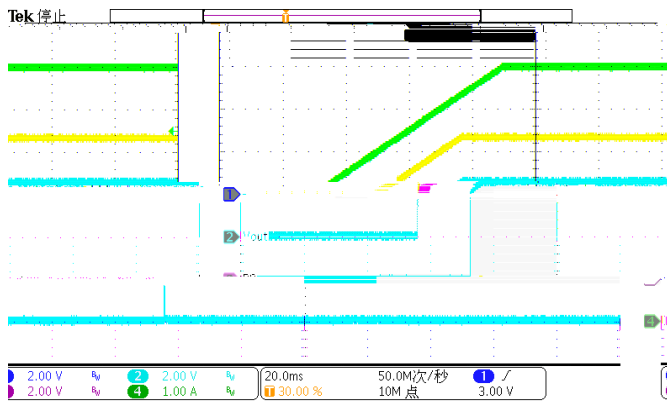
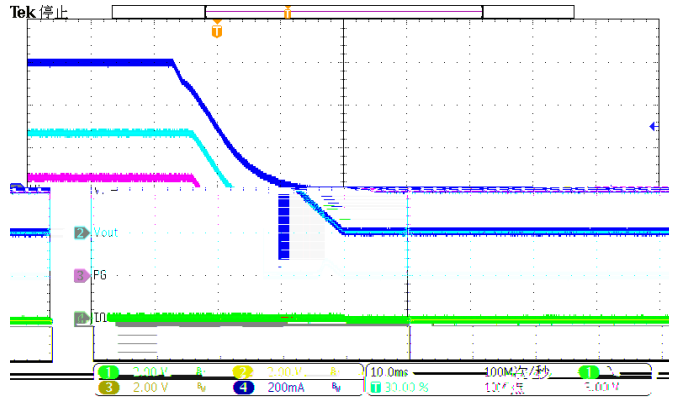
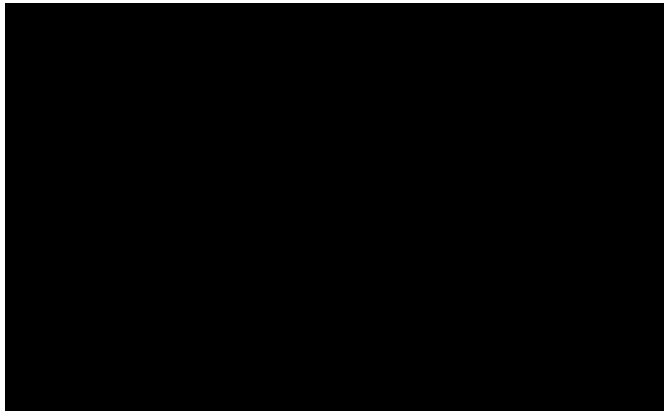
--	--	--	--	--	--

SCT71405 Series

Power Dissipation and Thermal Performance

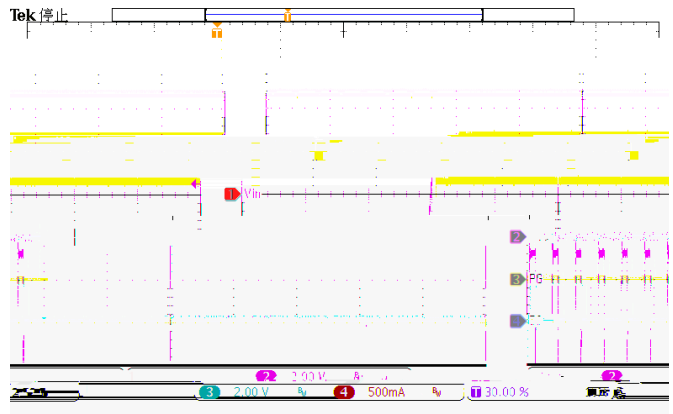
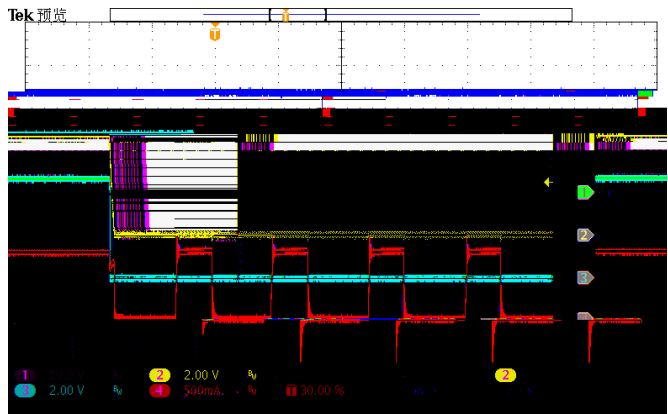
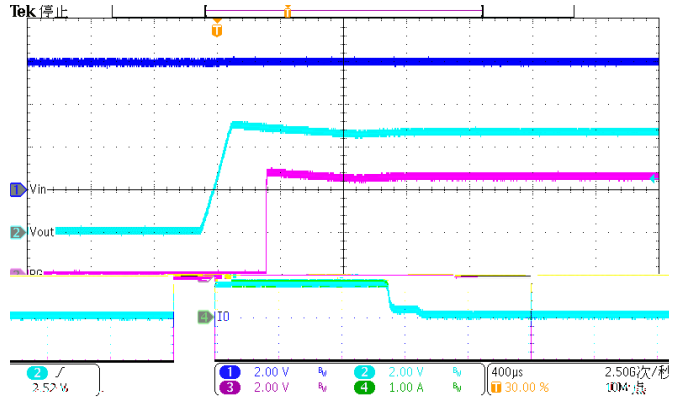
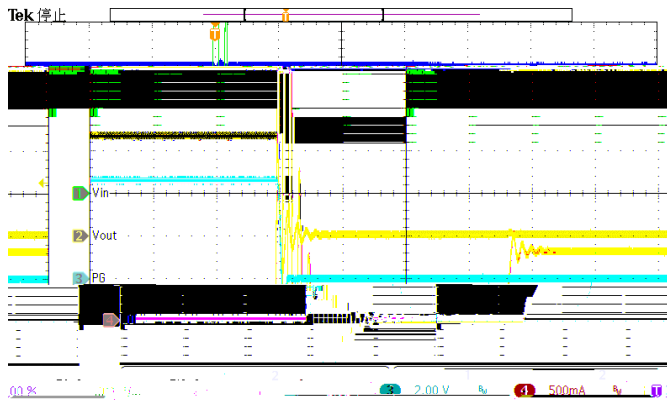
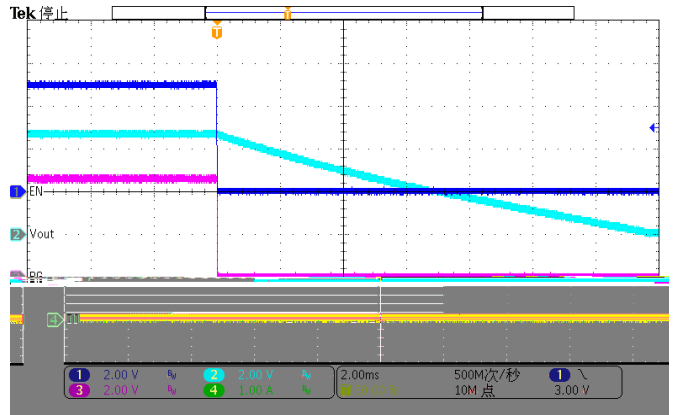
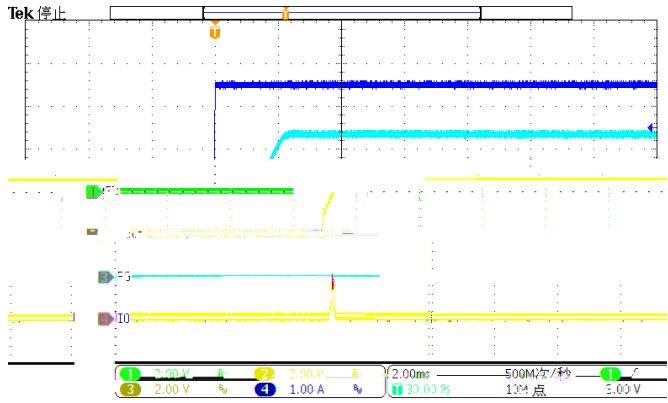
SCT71405 Series

Application Waveforms



SCT71405 Series

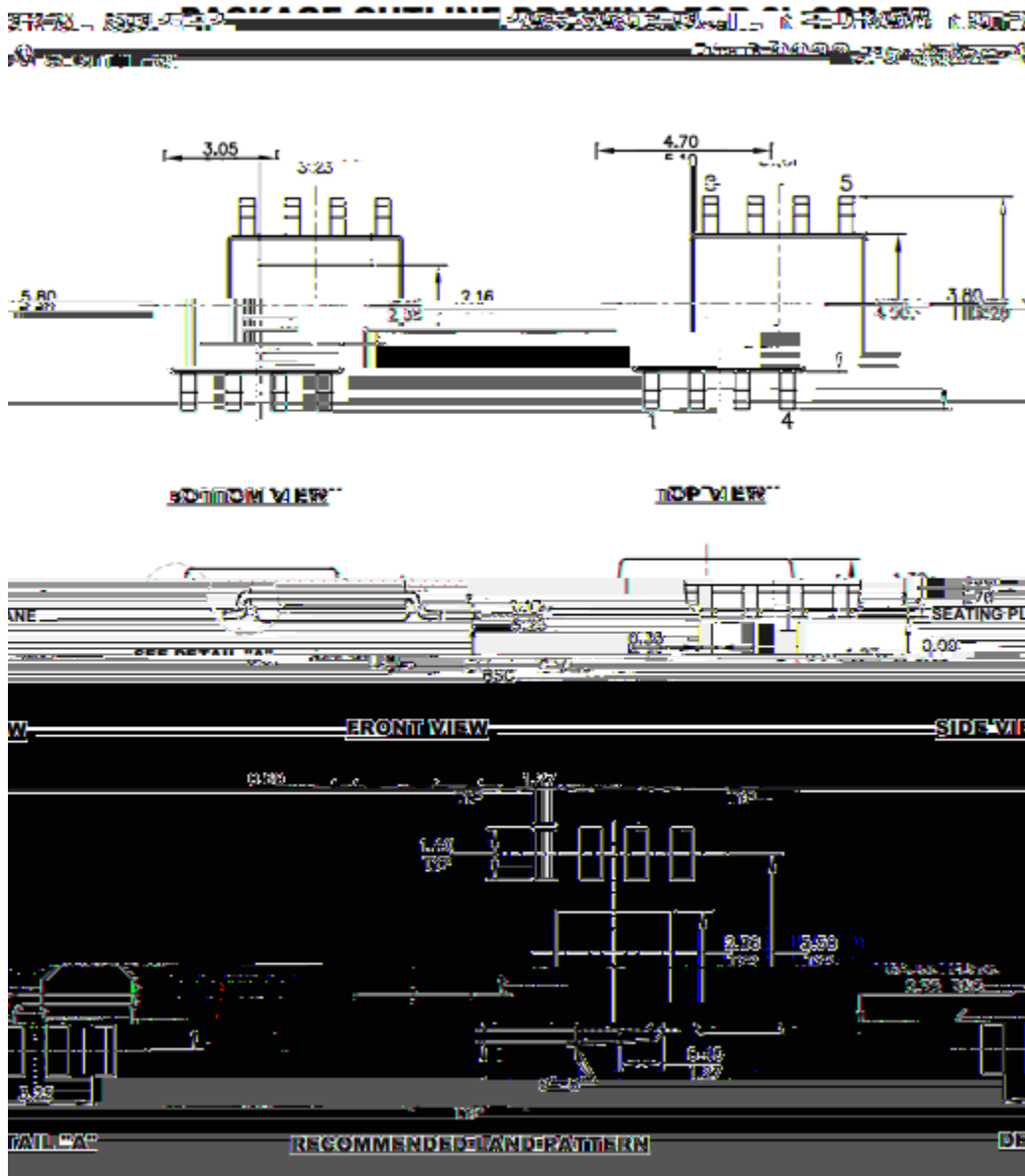
Application Waveforms(Continued)



Layout Guideline

- 1.
- 2.

SCT71405 Series



NOTE:

- 1.
- 2.
- 3.
- 4.
- 5.
- 6.

SCT71405 Series
